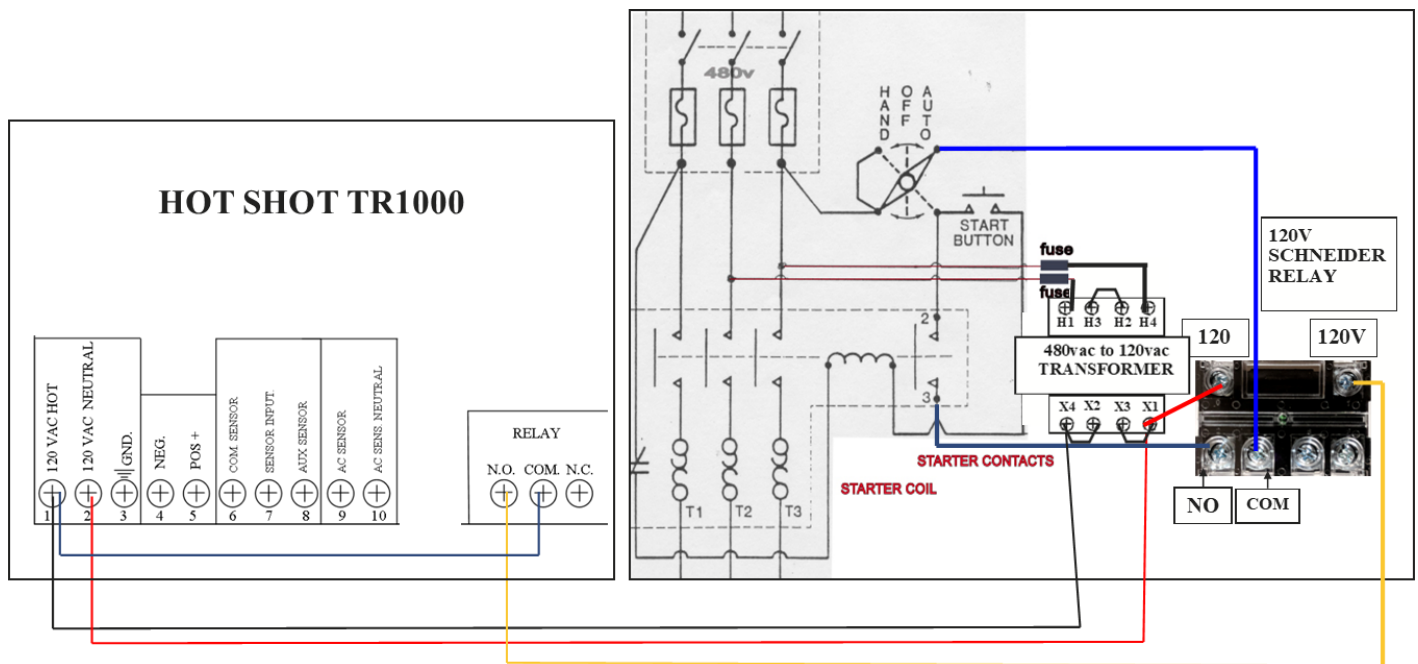


TR-1000 WIRING INSTRUCTIONS FOR SPARTAN 480V STEPDOWN TRANSFORMER AND SCHNEIDER 120VAC RELAY FOR 480V PUMP CONTROL

WARNING: Never have 480v wiring in any Hot Shot enclosure. 480v wiring must be performed by a trained professional and always in a proper electrical enclosure with an outside disconnect. Failure to do so may result in equipment failure or serious injury.

To supply power to the Hot Shot mount a 480v-120v step-down transformer in the pump panel. A Hot Shot only requires 1 watt of power to operate. *Hot Shot Systems suggest using a minimum of a single phase 60 hertz 0.050kVA transformer. They are available for purchase through Hot Shot Systems, just request when ordering.*

To step down 480v to 120v on the **Spartan SP50MQMJ**, three jumpers must be installed connecting terminals **H3 to H2**, **X4 to X2** and **X3 to X1**. Wire two 480v lines through two fuses (1/2 or 1 amp each) to the primary side of the step-down transformer terminals to **H1** and **H4**. Wire the 120v **X4** terminal of the step-down transformer through a fuse (1 amp) which then goes to the first 120v input of the Hot Shot Receiver (120 volt polarity does not matter). Wire the 120v **X1** terminal of the step-down transformer to the second 120vac input of the Hot Shot Receiver input. Add a jumper from terminal #1 of the Hot Shot to it's **COM** terminal. Wire the **NO** terminal on the Hot Shot to one side of the 120v relay's coil. Connect the other side of the relay's coil to the **X1** terminal of the step-down transformer. Run a wire from the Au- to terminal of HOA switch to the **COM** terminal of the relay and a wire from the Starter Contact to the **NO** terminal of the relay. Connect a wire from the ground terminal of the Hot Shot to a central grounding system or an NEC approved ground rod.



PUMP START: WHEN THE HOT SHOT AT THE PIVOT'S SENSOR INPUT TO SENSOR COM IS CLOSED IT SENDS OUT THE RELAY ON COMMAND TO THE HOT SHOT AT THE PUMP. WHEN A RELAY ON COMMAND IS RECEIVED THE HOT SHOT WILL CLOSE ITS N.O. TO COM CONTACTS AND LIGHT UP THE RELAY LED. THIS WILL ENERGIZE THE 120VAC RELAY TO CLOSE THE 480V PUMP CONTACTOR STATRTING THE PUMP.

PUMP STOP: WHEN THE HOT SHOT AT THE PIVOT'S SENSOR INPUT TO SENSOR COM IS OPENED IT SENDS OUT THE RELAY OFF COMMAND TO THE HOT SHOT AT THE PUMP. WHEN A RELAY OFF COMMAND IS RECEIVED THE HOT SHOT WILL OPEN ITS N.O. TO COM CONTACTS AND TURN OFF THE RELAY LED. THIS WILL DE-ENERGIZE THE 120VAC RELAY TO OPEN THE 480V PUMP CONTACTOR STOPING THE PUMP.